

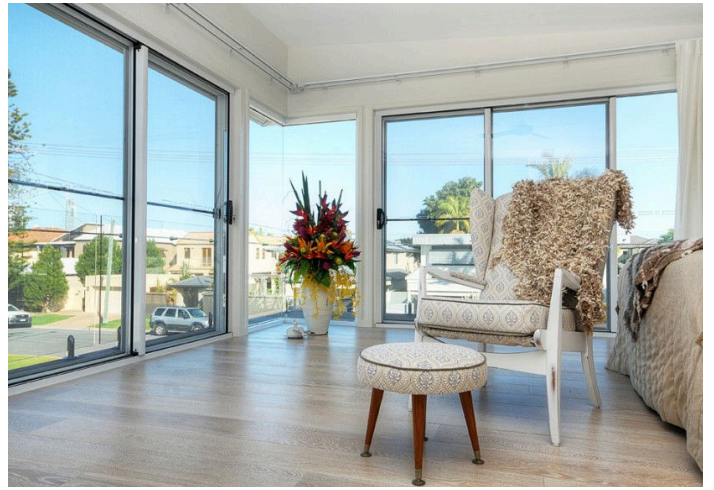


HAUS  
FLOORS

**72 GALEEN DRIVE  
BURLEIGH**







70 Galeen is a humble yet elegant development tucked away in a quiet cul-de-sac of Burleigh Waters. Only metres away from Miami Lake with bridge access with public transport a short walk up the road.

Backing onto Galeen Drive Family Park this development is only 1km away from the famous Burleigh Heads Beach Esplanade enjoying the lifestyle of Burleigh's great restaurants, cafes & bars. These homes tick all the boxes with spacious living areas, large bedrooms, and an upstairs retreat for Mum & Dad with an incredible ensuite and walk-in wardrobe.